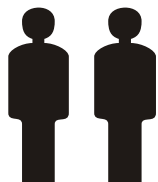
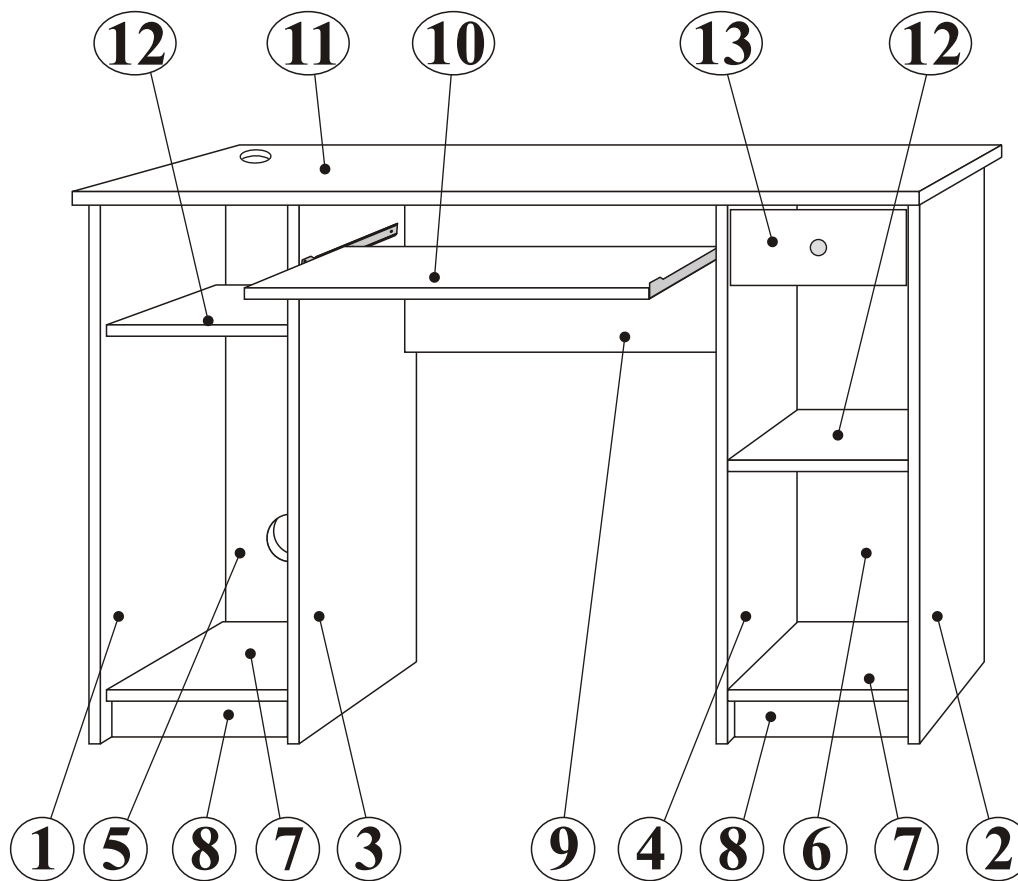
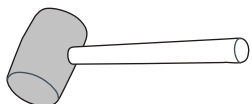
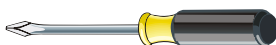
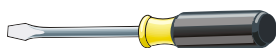
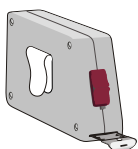


# MONTAGEANLEITUNG

## INSTRUKCJA MONTAŻOWA



**2 Personen**  
**2 Osoby**



Max. zulässige Belastungen  
 von Einlegeböden in kg:  
 Maksymalne obciążenie półek w kg:

Stärke/Gr. Länge/Dł. mm	Spanplatte/Płyta		
	15	18	22
0<400			
401<600	40	40	40
601<800	24		
801<1000	15	30	

### Pflegehinweis!

Bitte nur mit einem Staubtuch oder einem feuchten Lappen reinigen.

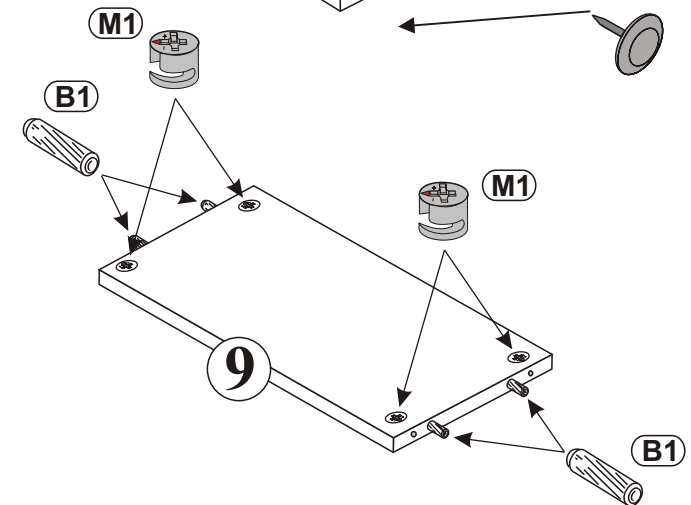
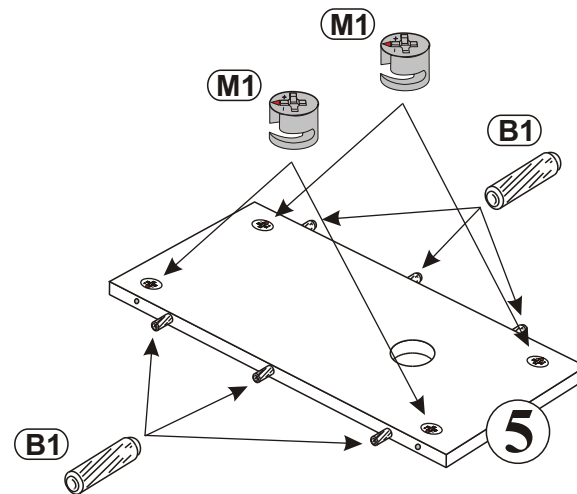
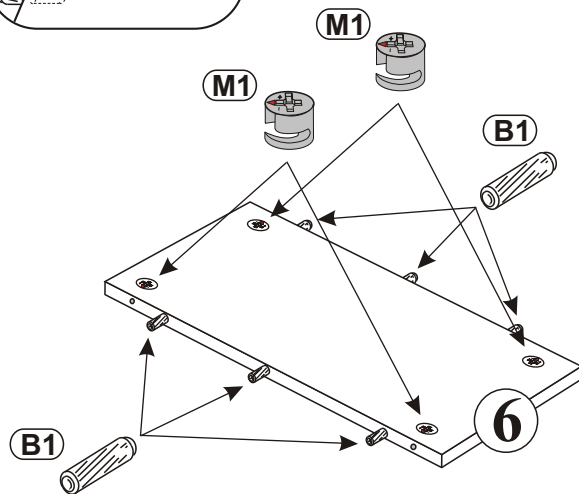
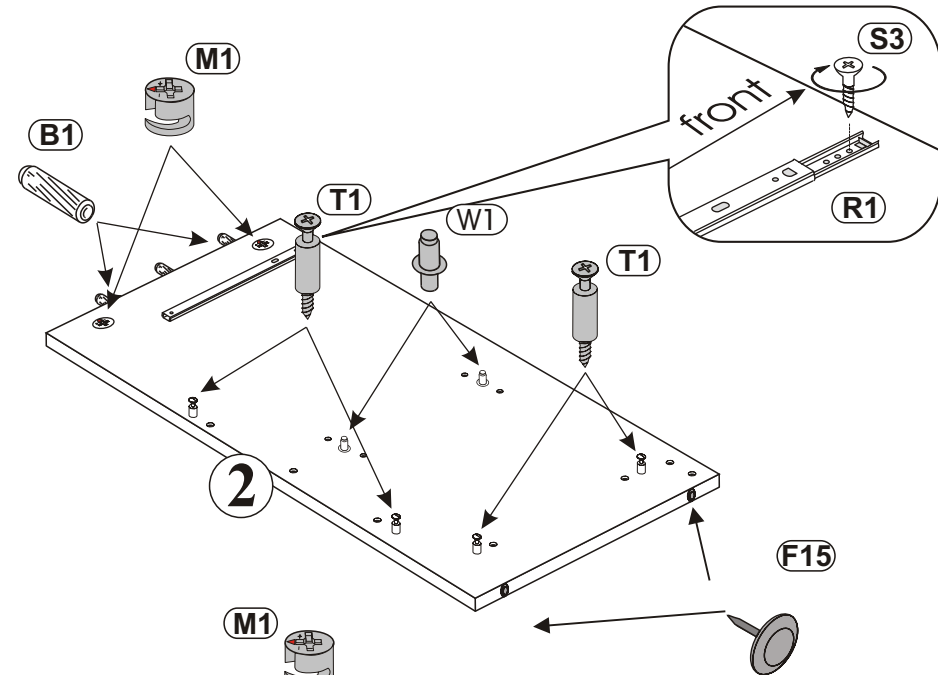
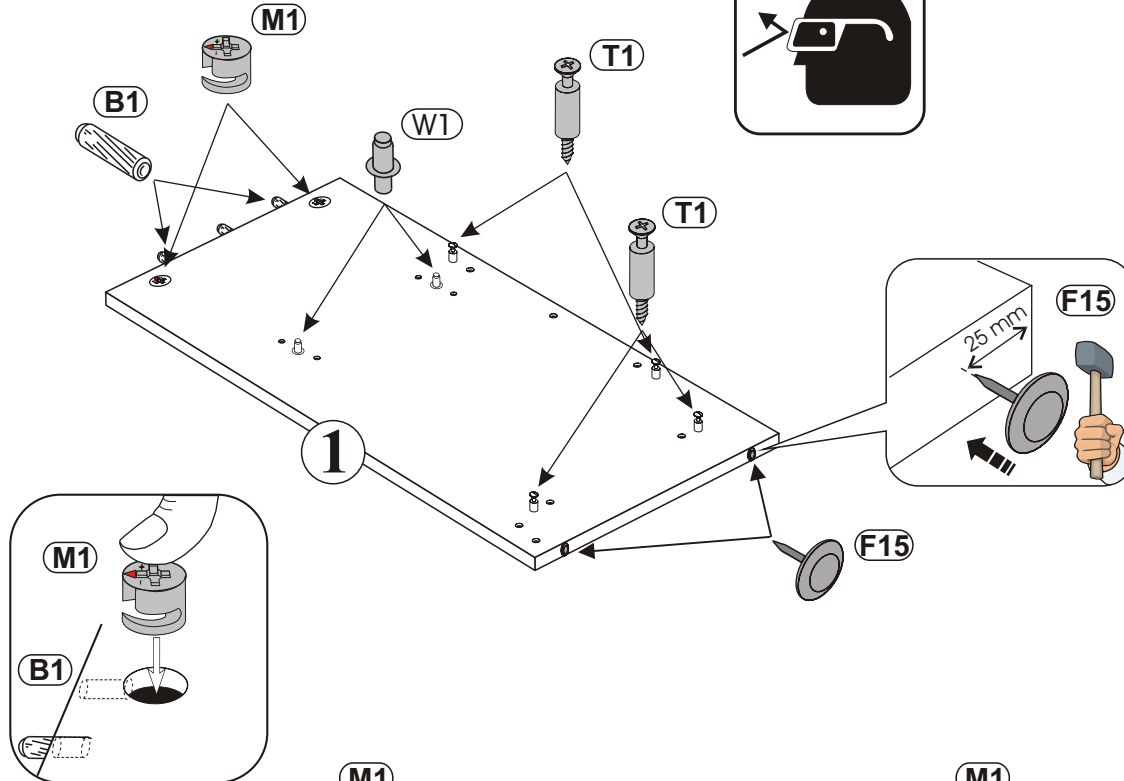
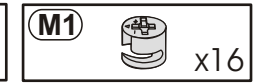
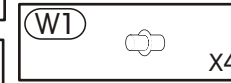
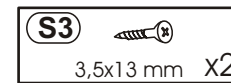
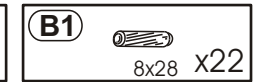
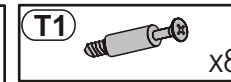
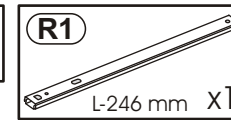
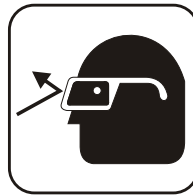
**KEINE** scheuernde Putzmittel verwenden!

### Wskazówka dotycząca pielęgnacji!

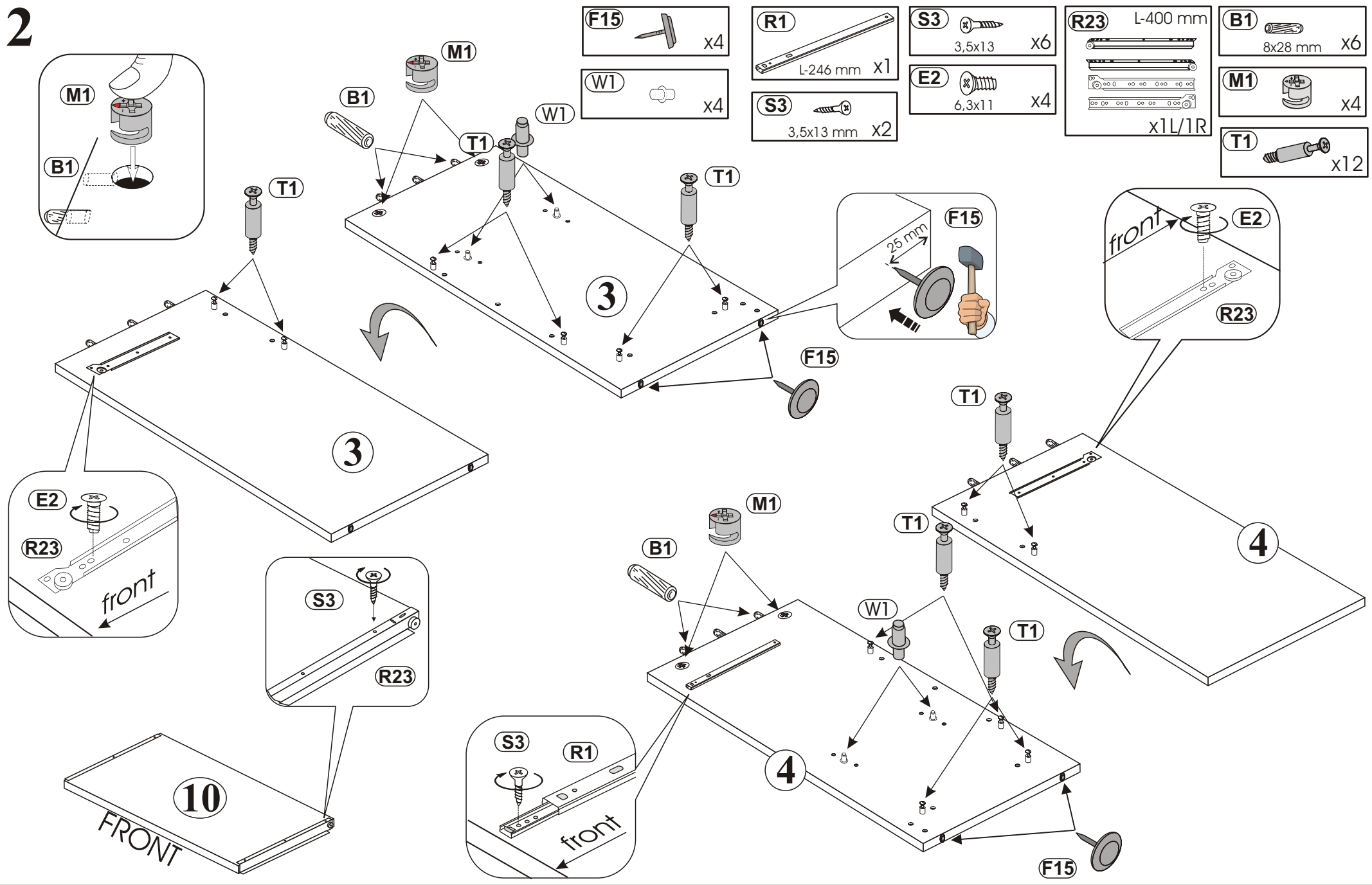
Proszę czyścić tylko suchą lub lekko wilgotną szmatką do kurzu. Nie używać żadnych środków szorstkich!

<p>NR 1</p> <p><b>B1</b>  8x28 mm x44</p> <p><b>M1</b>  x28</p> <p><b>T1</b>  x28</p>	<p>NR 3</p> <p><b>R23</b> L-400 mm  x1L/1R</p> <p><b>S3</b>  3,5x13 x6</p> <p><b>E2</b>  6,3x11 x4</p>
<p>NR 2</p> <p><b>F15</b>  x8</p> <p><b>L1</b>  x1</p> <p><b>C15</b>  60x22 x2</p> <p><b>W1</b>  x8</p>	<p>NR 4</p> <p><b>R1</b>  L-246 mm x2</p> <p><b>S3</b>  3,5x13 mm x4</p> <p><b>A1</b>  M4x9 mm x2</p>
<p>NR 5</p> <p><b>P6</b>  4x30 mm x1</p> <p><b>U5</b>  x1</p>	

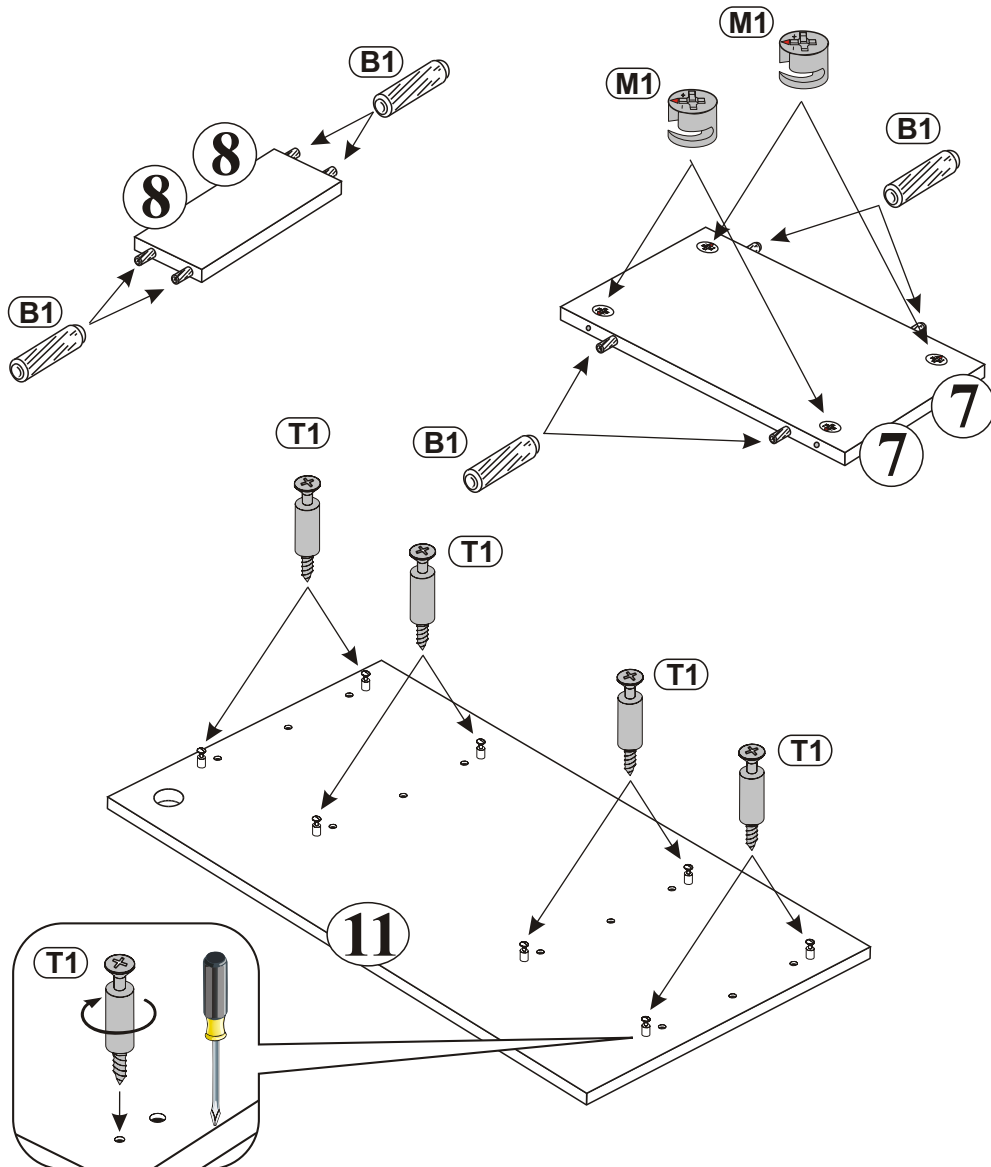
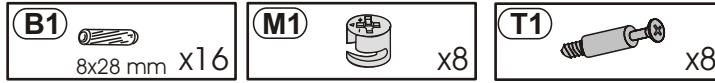
**1**



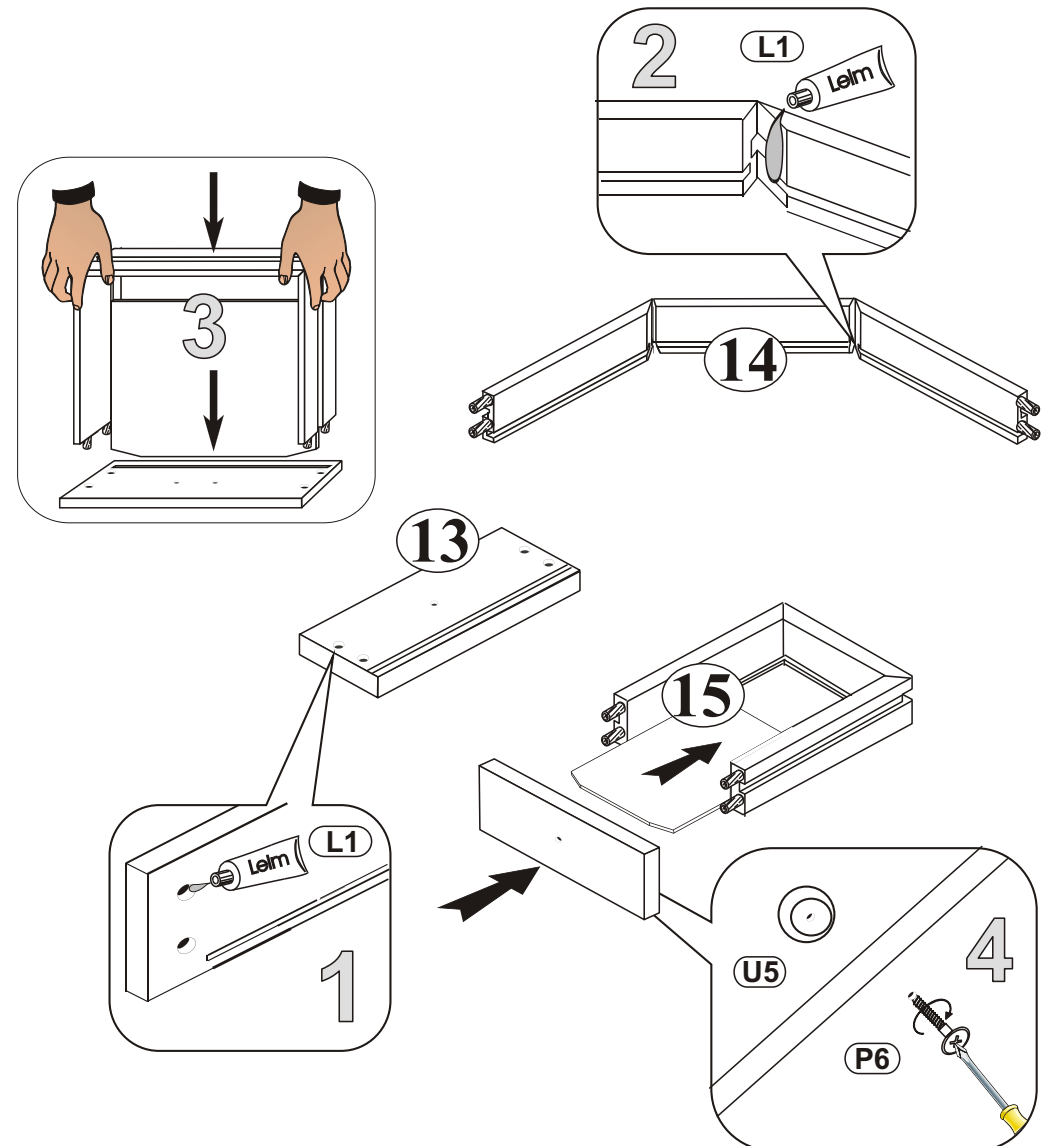
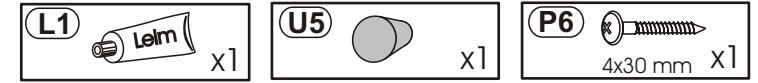
**2**



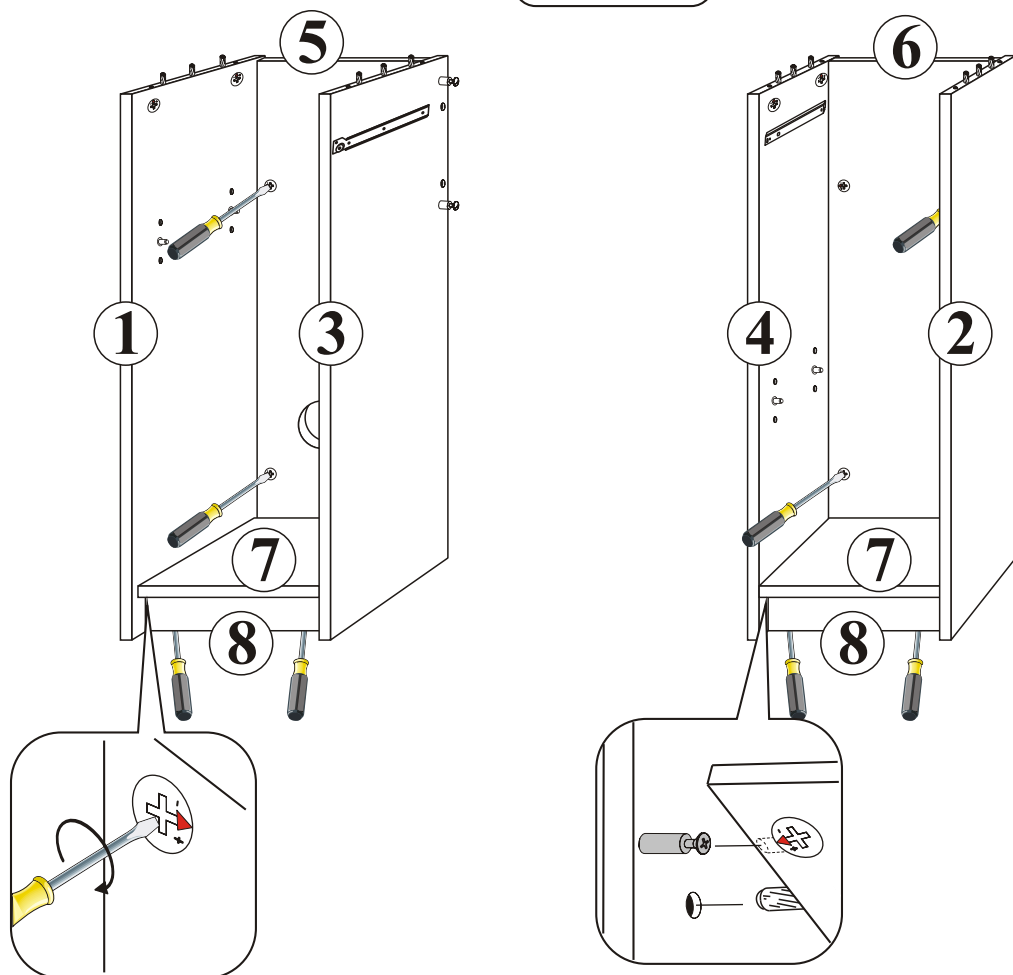
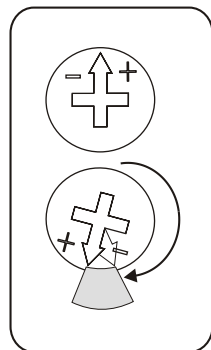
**3**



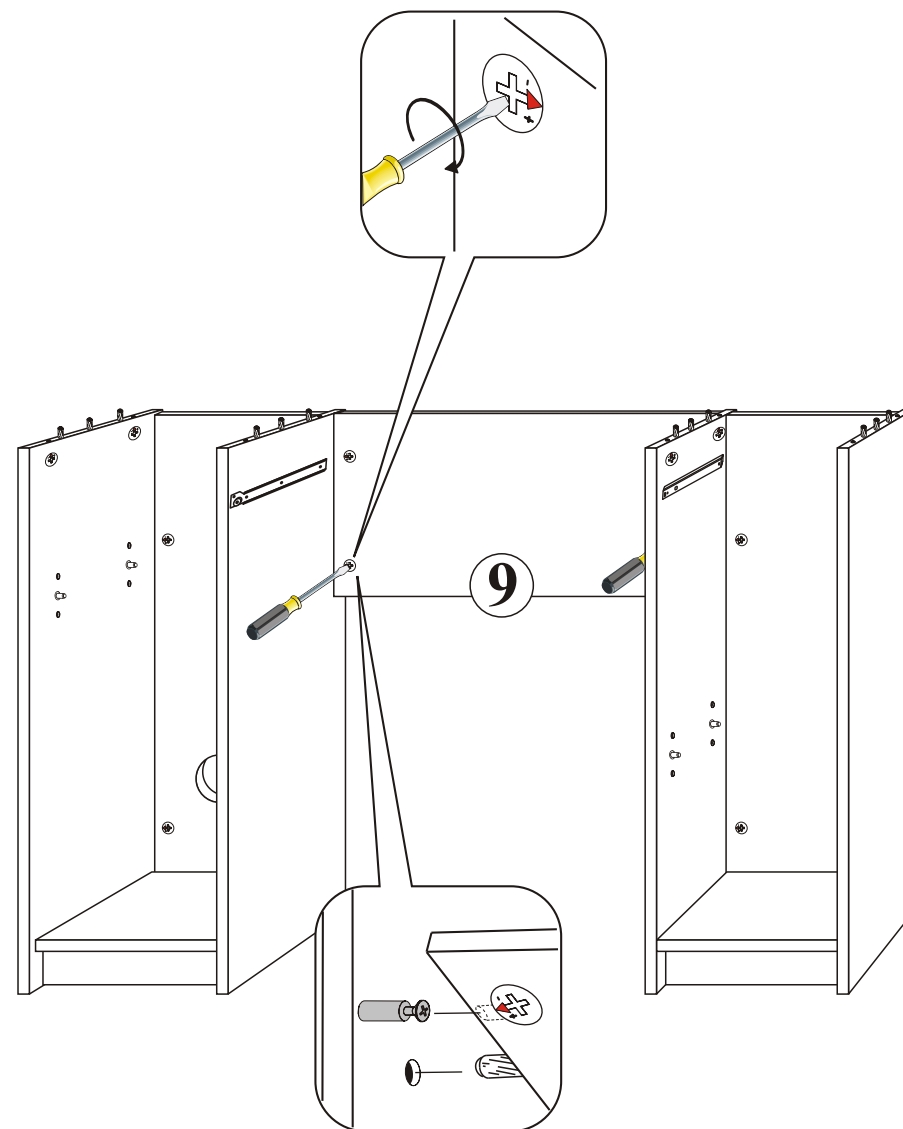
**4**



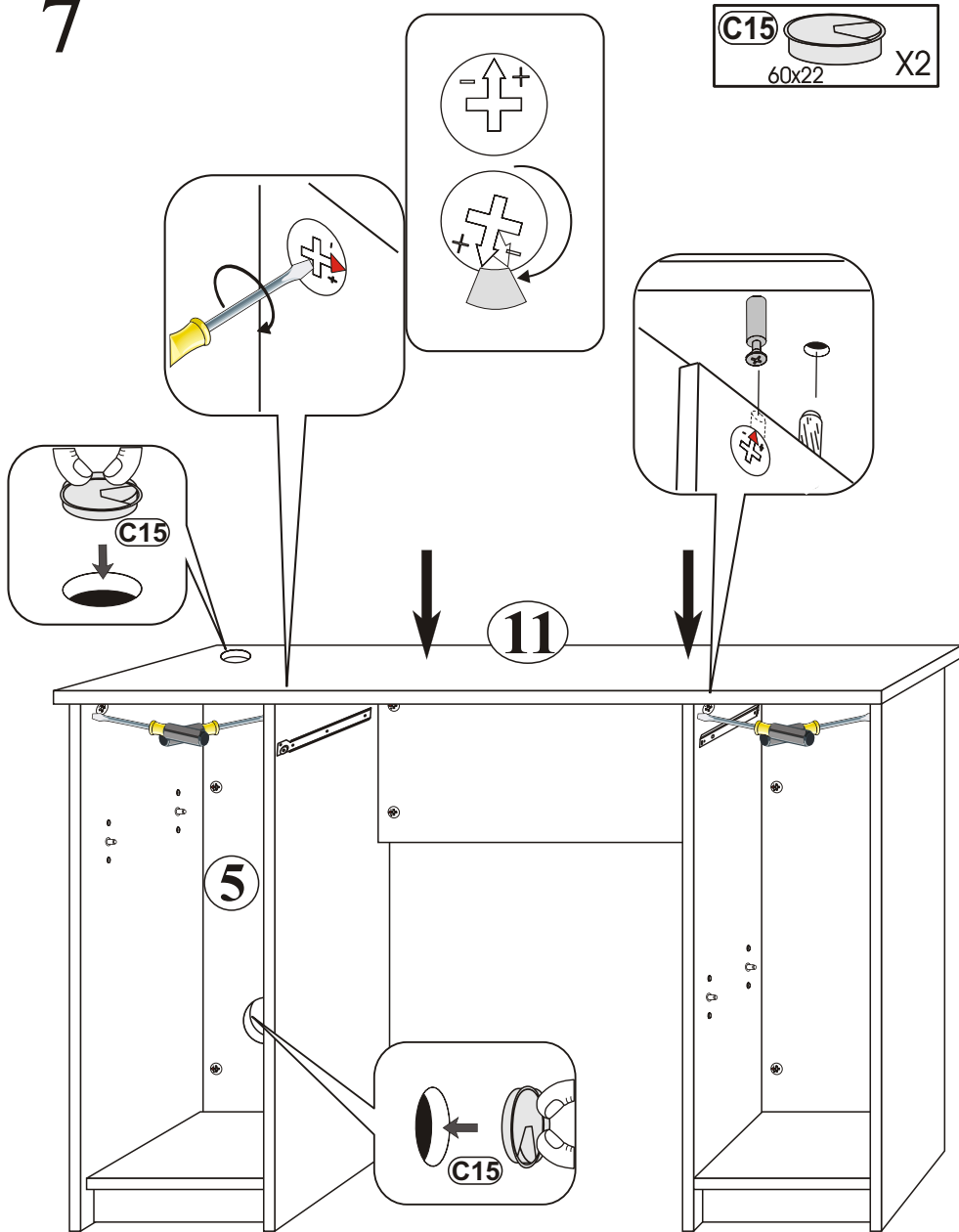
**5**



**6**



**7**



**8**

