

Pflegehinweis!

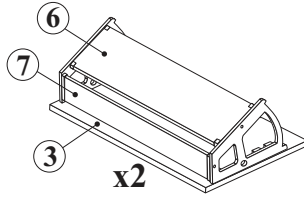
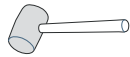
Bitte nur mit einem Staubtuch oder einem feuchten Lappen reinigen.
KEINE scheuernde Putzmittel verwenden!

Wskazówka dotycząca pielęgnacji!
Proszę czyścić tylko suchą lub lekko wilgotną szmatką do kurzu. Nie używać żadnych środków szorstkich!

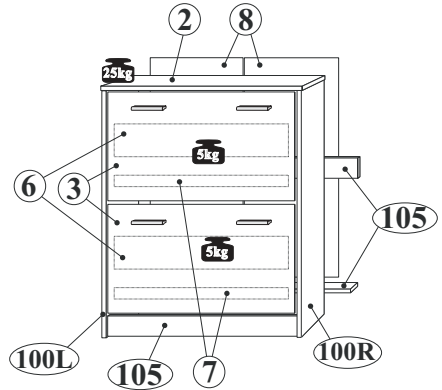
MONTAGEANLEITUNG
INSTRUKCJA MONTAŻOWA



2 Personen
2 Osoby

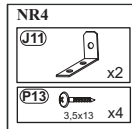
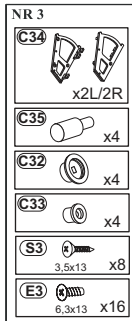
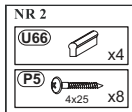
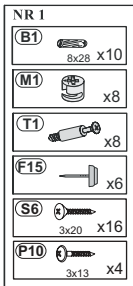


x2

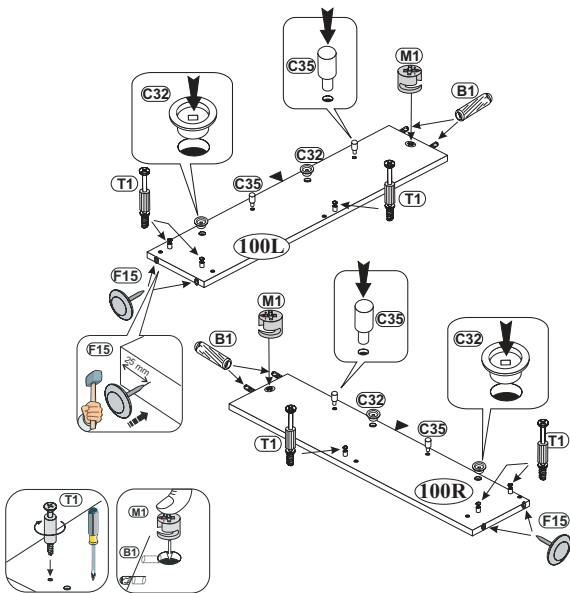
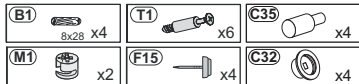


Max. zulässige Belastungen
von Einlegeböden in kg:
Maksymalne obciążenia półek w kg:

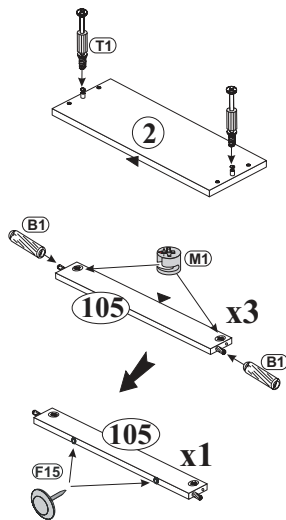
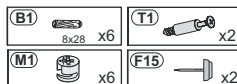
| Stärke/Gr. Länge/Dł. mm | Spannplatte/Płyta | | |
|----------------------------|-------------------|----|----|
| | 15 | 18 | 22 |
| 0-400 | | | |
| 401-600 | 40 | 40 | 40 |
| 601-800 | 24 | | |
| 801-1000 | 15 | 30 | |



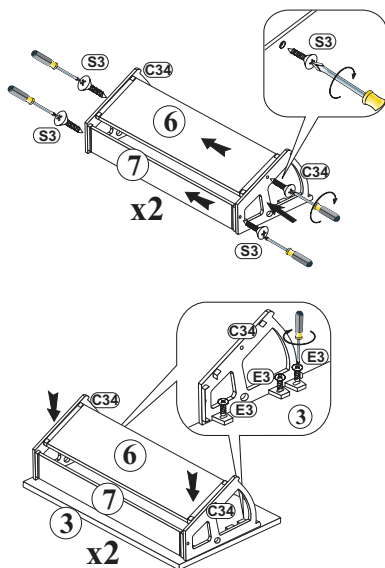
1



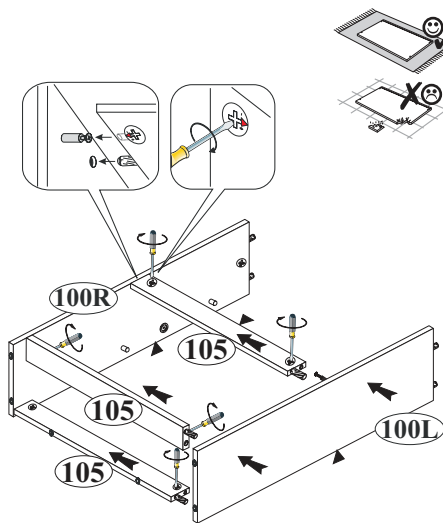
2



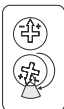
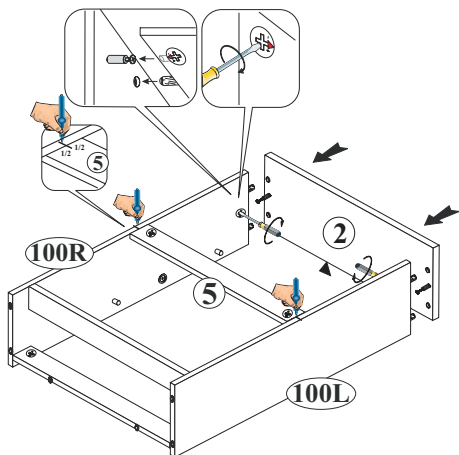
3



4

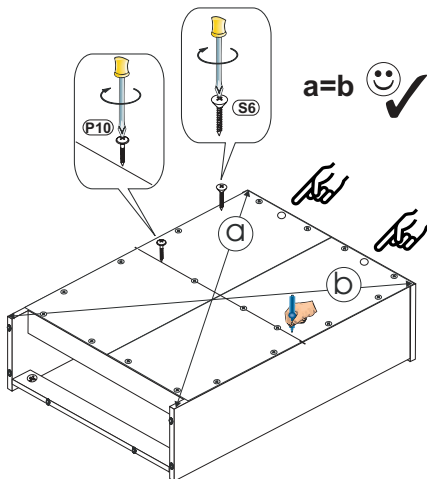


5



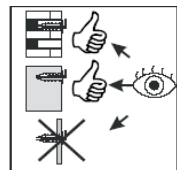
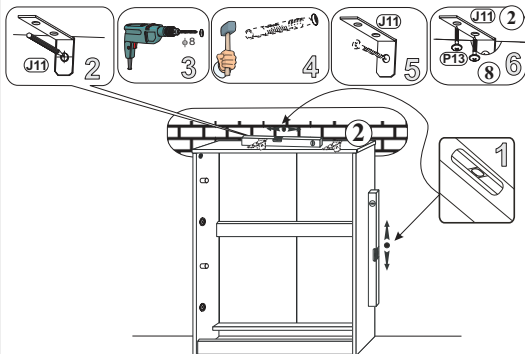
6

- | | | | |
|------------|--|------|-----|
| S6 | | 3x20 | x16 |
| P10 | | 3x13 | x4 |



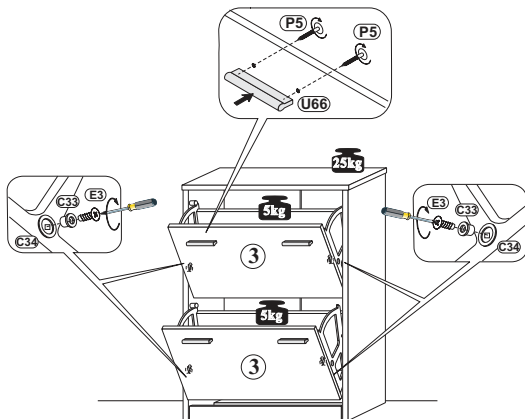
7

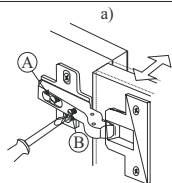
- | | | | |
|------------|--|--------|----|
| J11 | | x2 | |
| P13 | | 3,5x13 | x4 |



8

- | | | | |
|------------|--|--------|----|
| C33 | | x4 | |
| U66 | | x4 | |
| E3 | | 6,3x13 | x4 |
| P5 | | 4x25 | x8 |



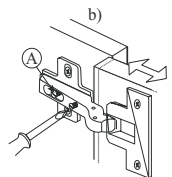


Verstellmöglichkeiten

a) Fugenverstellung:
 Befestigungsschraube "A" lockern, gewünschte Fuge mit Schraube "B" einstellen, Schraube "A" anziehen.

b) Tiefenverstellung:
 Befestigungsschraube "A" lockern, Bandarm nach vorne oder rückwärts verschieben, Schraube "A" anziehen, Schraube "B" mit einer 1/4 Drehung nach rechts arretieren.

c) Höhenverstellung:
 Befestigungsschraube "C" lockern, Höhe einstellen, Schraube "C" anziehen.

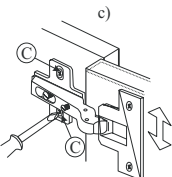


Instructions for hinge adjustment

a) Side adjustment:
 Loosen fixing screw "A", adjust gap with screw "B" and retighten screw "A".

b) Depth adjustment:
 Loosen fixing screw "A", push hinge arm forwards or backwards, re-tighten screw "A", fix screw "B" with a 1/4-tur in clock-wise direction.

c) Height adjustment:
 Loosen screw "C", adjust height, re-tighten screw "C".



Les possibilités de positionnement

a) Positionnement de la rainure:
 Desserrer la vis de fixation "A", positionner avec la vis "B" la rainure (joint) souhaitée et resserrer la vis "A".

b) Positionnement de la profondeur:
 Desserrer la vis de fixation "A" (1 tour), régler la profondeur et resserrer la vis "A".

c) Positionnement de la hauteur:
 Desserrer la vis de fixation "C" (1 tour), positionner la hauteur et resserrer la vis "C".

Możliwości regulacji

a) Regulacja szczeliny:
 Poluzować wkręt "A", wkrętem "B" ustawić odpowiednią szczelinę, dokręcić wkręt "A".

b) Regulacja głębokości:
 Poluzować wkręt "A" (1 obrót), ustawić głębokość, dokręcić wkręt "A".

c) Regulacja wysokości:
 Poluzować wkręt "C" (1 obrót), dokonać regulacji wysokości położenia drzwi, wkręt "C" dokręcić.

