

**Pflegehinweis!**

Bitte nur mit einem Staubtuch oder einem feuchten Lappen reinigen.  
**KEINE** scheuernde Putzmittel verwenden!

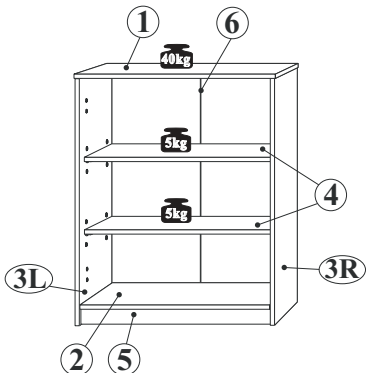
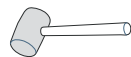
**Wskazówka dotycząca pielęgnacji!**

Proszę czyścić tylko suchą lub lekko wilgotną szmatką do kurzu. Nie używać żadnych środków szorstkich!

**MONTAGEANLEITUNG**  
**INSTRUKCJA MONTAŻOWA**



**2 Personen**  
**2 Osoby**

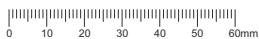


Max. zulässige Belastungen  
von Einlegeböden in kg:  
Maksymalne obciążenie półek w kg:

Länge/Dł. mm	Stärke/Gr. Sperrplatte/Płyta		
	15	18	22
0-400			
401-600	40	40	40
601-800	24		40
801-1000	15	30	

NR 1

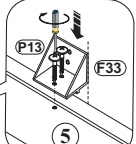
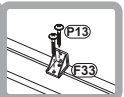
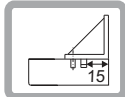
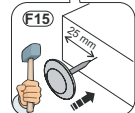
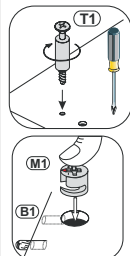
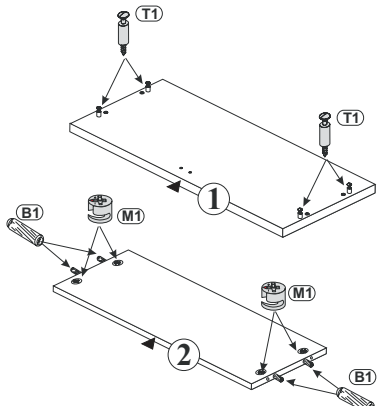
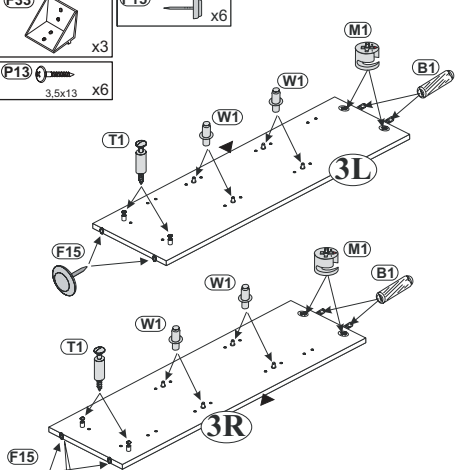
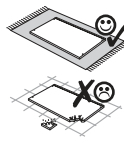
- (B1)** 8x28 x8
  - (M1)** x8
  - (T1)** x8
  - (W1)** x8
  - (F33)** x3
  - (P13)** 3.5x13 X12
  - (F15)** x6
  - (S6)** 3x20 x16
  - (C14)** 4x4
- NR 2
- (J11)** x2
  - (P13)** 3.5x13 x4



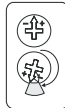
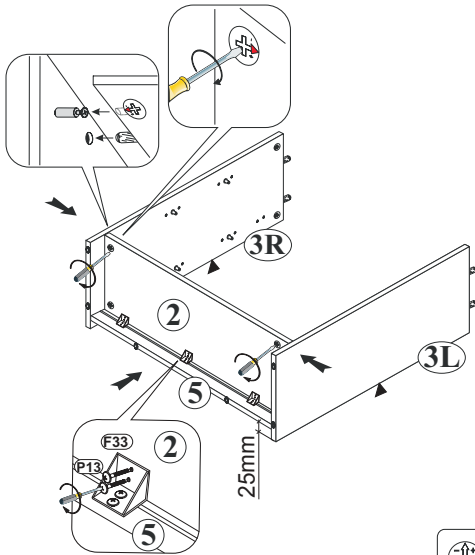
**1**

- (B1)** 8x28 x8
- (M1)** x8
- (T1)** x8
- (W1)** x8

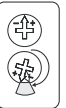
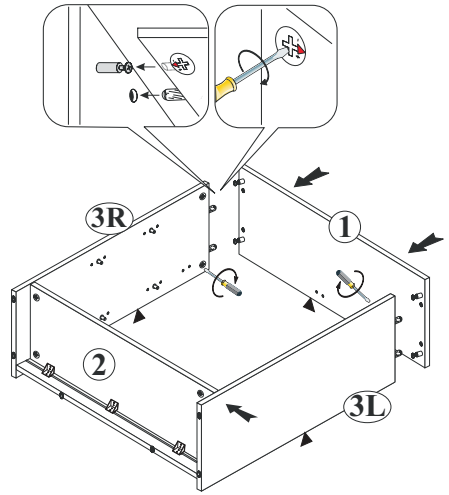
- (F33)** x3
- (P13)** 3.5x13 x6
- (F15)** x6



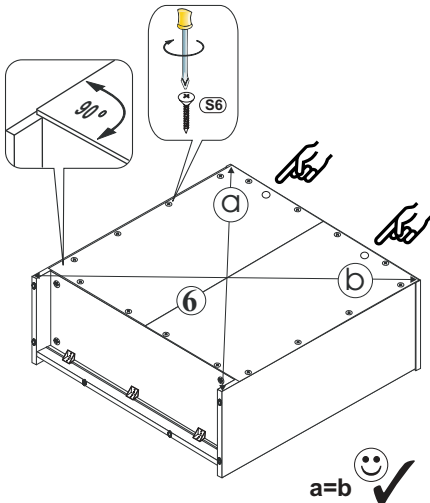
**2** **P13** 3,5x13 x6



**3**



**4** **S6** 3x20 x16



**5** **J11** x2 **P13** 3,5x13 x4 **C14** 620mm x4

