

Pflegehinweis!

Bittene r mitein emSt austuchod er einem feuchtenLa ppenrei nigen.
KEINEscheuernde Putzmittel verwenden!

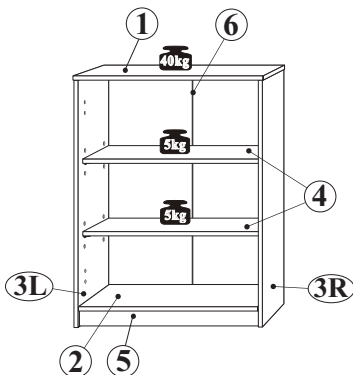
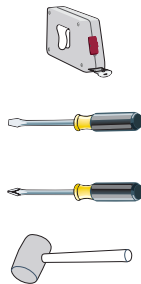
Wskazówka dotycząca pielęgnacji!

Proszę zyczyścić lkosu chą lubelek kowi lgotną szmatką doku rzu. Nieuz ywac żadnych środkówz orstkich!

MONTAGEANLEITUNG
INSTRUKCJA MONTAŻOWA



2 Personen
2 Osoby

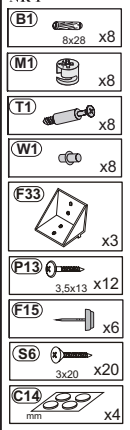


Max. zulässige Belastungen
von Einlegeböden in kg:
Maksymalne obciążenie półek w kg:

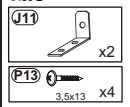
Länge/Dł. mm	Stärke/Gr. Spanplatte/Plyta		
	15	18	22
0-400			
401-600	40	40	40
601-800	24		
801-1000	15	30	



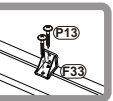
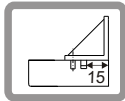
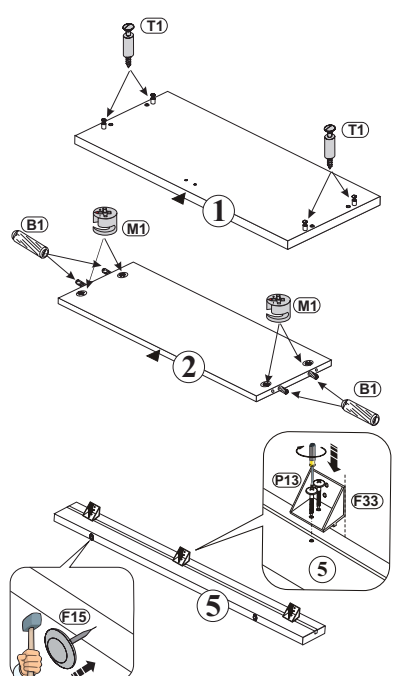
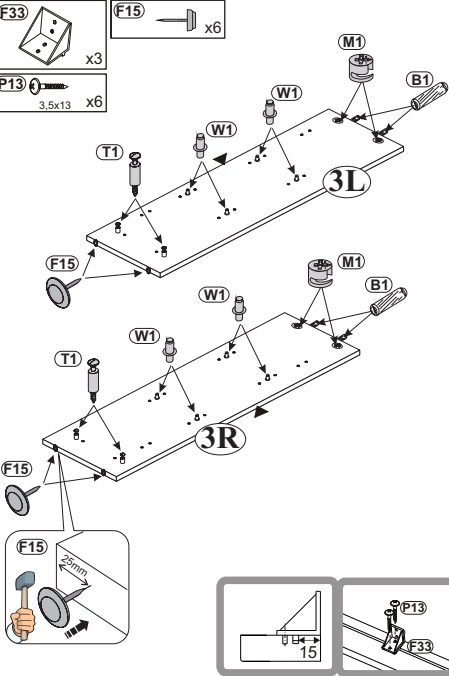
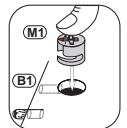
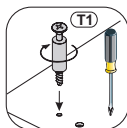
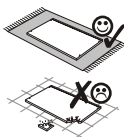
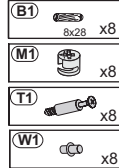
NR 1



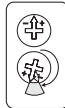
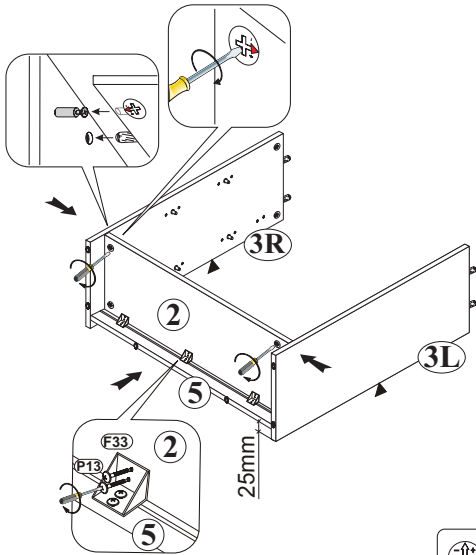
NR 2



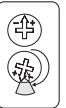
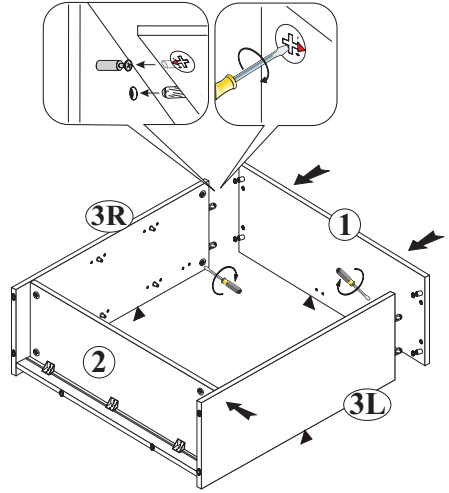
1



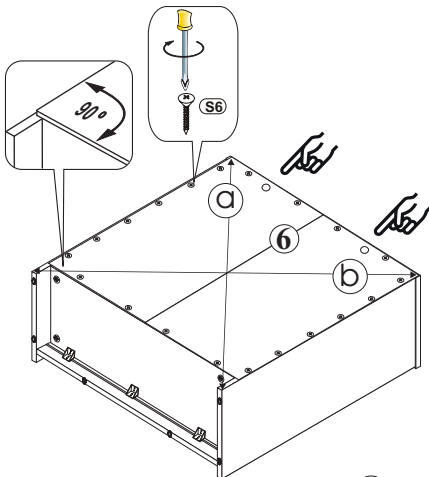
2



3



4



a=b

5

